

HandyPort Usage

How to use MSPP in Windows XP SP2

Application Note

2006. 6. 29

AN-2010-8E

Version 1.0



Copyright

HandyWave Co., Ltd.

202-4 Yatap-dong, Bundang-gu, Seongnam City, Gyunggi Province, 463-070, Republic of Korea

Tel: 82-31-709-8900, Fax: 82-31-708-9455, <http://www.handywave.com/index3.htm>

How to use MSPP in Windows XP SP2, Application Note, AN-2010-8E, 2006. 06. 29

Copyright© 2003 - 2006 HandyWave Co., Ltd. All right reserved.

Table of Contents

1. INTRODUCTION	1-1
1.1. WINDOWS XP SP2 (SERVICE PACK 2)	1-1
1.2. REQUIREMENTS.....	1-1
1.3. REFERENCE	1-1
2. INSTALLATION AND ADDITIONAL SETTINGS	2-1
2.1. FOLDER OPTIONS SETTING	2-1
2.2. MODIFYING THE “BTH.INF”	2-1
2.3. SOFTWARE INSTALLATION.....	2-1
2.4. USB DRIVER UPDATE.....	2-2

1. Introduction

This document describes how to use MSPP in Windows XP SP2 (Service Pack 2) environment.

1.1. Windows XP SP2 (Service Pack 2)

Windows XP SP2 (Service Pack 2) is including the Bluetooth software from Microsoft. Therefore, there would be a confliction of software driver on Bluetooth to use MSPP. This document describes how to solve this problem.

1.2. Requirements

- Windows: Windows XP SP2
- HandyPort: HPU-120 (Silver color)
- Related System File: bth.inf

1.3. Reference

1. MSPP User's Manual

2. Installation and Additional Settings

This chapter describes the procedures to use MSPP in Windows XP SP2 (Service Pack 2). Please don't place a USB adapter on a USB port before finishing software installation.

2.1. Folder Options Setting

Windows hides the system folders and files by default to protect the system. To use MSPP in the Windows XP SP2 (Service Pack 2), you have to modify a driver information file as follows:

Step 1: Click the Windows Explorer from "Start -> All programs -> Accessories -> Windows Explorer".

Step 2: Click the Folder Options under Tools.

Step 3: Click the View tab. And check "Show hidden files and folders" under the Hidden files and folders.

Step 4: Click the Apply and OK.

2.2. Modifying the "bth.inf"

The bth.inf includes the information of Bluetooth devices. You need to replace this file with a file from HandyWave as follows:

Step 1: Click the Windows Explorer from "Start -> All programs -> Accessories -> Windows Explorer".

Step 2: Go to "C:\WINDOWS\inf" and find a "bth.inf" file.

Step 3: Rename it to "bth_org.inf".

Step 4: Copy the "bth.inf" from HandyWave to "C:\WINDOWS\inf".

2.3. Software Installation

If you've done this already, you can skip this step.

There is a setup.exe in MSPP CD-ROM. Please double-click the setup.exe to install MSPP software into your PC and do follow instructions by installation wizard.

You may encounter messages regarding to the Windows Logo Test, please click the Yes to continue the installation. You need to restart your PC after finishing the installation.

2.4. USB Driver Update

You can put a USB adapter (HPU-120) on a USB port of PC after restarting. And you can update the USB driver as follows:

Step 1: Click “Start -> Control Panel”. And double-click the System.

Step 2: Click the hardware tab. And click the Device Manager.

Step 3: There will be a Samsung Bluetooth Solution (or Generic Bluetooth Radio) under the Bluetooth Radio. Right-click on the Samsung Bluetooth Solution and click the Update Driver.

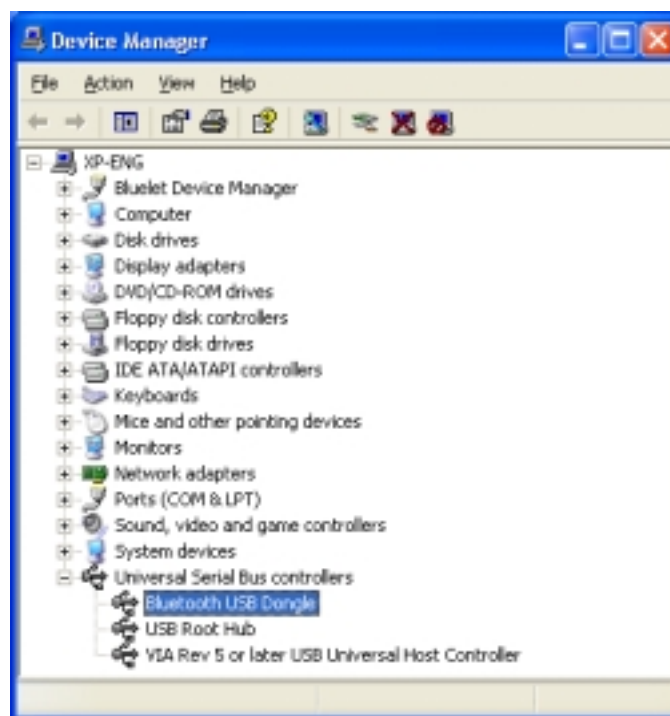
Step 4: Mark on “Install from a list or specific location (Advanced)” and click the Next on the Hardware Update Wizard.

Step 5: Mark on “Don’t search. I will choose the driver to install” and click the Next.

Step 6: Mark on “Have Disk” and select “BTCUSB.INF” from installation CD-ROM. Click the OK and Next. You may encounter messages regarding to the Windows Logo Test, please click the Yes to continue.

Step 7: Click the Finish after completing of Hardware Update Wizard.

Step 8: Verify the Bluetooth USB Dongle under Universal Serial Bus controllers at Device Manager.



Step 9: Right-click the Bluetooth icon (this is for Microsoft) on Taskbar and click the Delete (or Remove) to remove it from the Taskbar. (If applicable)

Now you can start and use MSPP in Windows XP SP2 (Service Pack 2) environment.